

## VALVES

### Inline Check Valve Code 1431

Conflow is renowned the world over as the leading supplier of specialist components and systems for dust suppression, fire suppression and all aspects of water control in underground coal Mining.

Today Conflow products can be found operating both on the surface and underground in all the major mining industries, from coal to gold, in more than 30 countries around the world. Furthermore, wherever minerals are moved in bulk – such as quarries, power stations and steel works - Conflow products are helping to reduce the negative impact on the local environment.

At Conflow our aim is to provide you with a comprehensive range of services to meet your individual needs.



### Description

The **Conflow Code 1431** - Inline Check Valves permit movement of flow media in one direction only. A light spring is fitted to assist valve closure at low pressure differentials across the valve. The valve, being in-line, fits compactly into a pipe line with minimum obstruction. May be used horizontally or vertically. For use with oil, water and air.

### Typical Applications

- On water dust suppression systems on mineral cutting machines to keep the pipelines "charged" with water so that the spray heads energise instantaneously when the supply valve is next turned on.

### Features

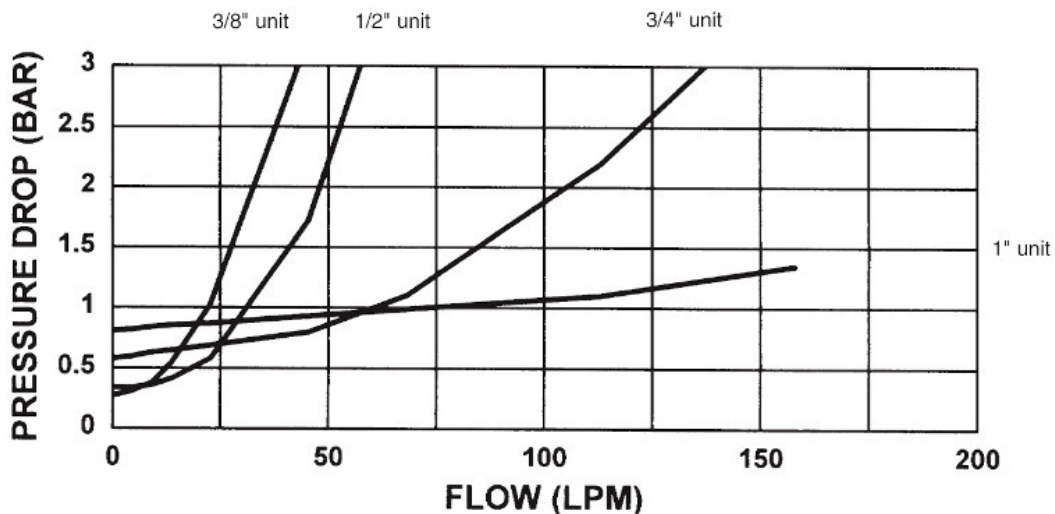
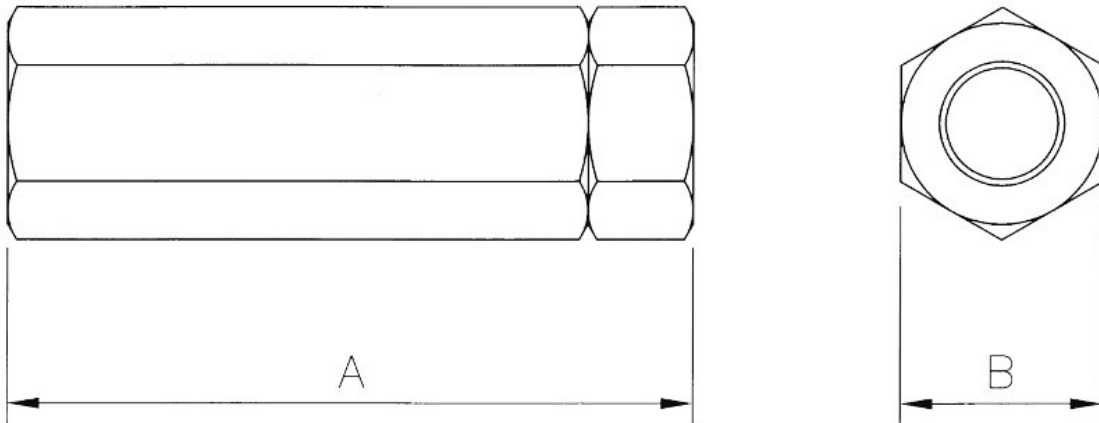
- 3/8", 1/2", 3/4" and 1" sizes available
- Maximum working pressure 275 bar
- Permits flow movement in one direction only
- Spring assisted closure
- Stainless Steel Construction
- Low Pressure units available - Details on request

## VALVES

### Inline Check Valve Code 1431

#### Specifications

Dimension	Unit	3/8"	1/2"	3/4"	1"
<b>A</b>	mm	90	93	126	137
<b>B</b>	mm	28	33	43	62
<b>Weight</b>	Kg	0.33	0.64	1.40	2.80



The information on this data sheet is accurate to the best of Conflow's knowledge, however we reserve the right to alter the product specification at any time. For any specific updated detail, please contact us.