

MACHINE SAFETY

Pressure / Flow Switch Code 4900

Conflow is renowned the world over as the leading supplier of specialist components and systems for dust suppression, fire suppression and all aspects of water control in underground coal Mining.

Today Conflow products can be found operating both on the surface and underground in all the major mining industries, from coal to gold, in more than 30 countries around the world. Furthermore, wherever minerals are moved in bulk – such as quarries, power stations and steel works - Conflow products are helping to reduce the negative impact on the local environment.

At Conflow our aim is to provide you with a comprehensive range of services to meet your individual needs.



Description

The **Conflow Code 4900** - Pressure/Flow Switch ensures electrical circuits only operate when minimum fluid pressure and flow requirements are satisfied. The unit uses the same principle as the Code 240 flowswitch, but with an additional hydraulic pressure latch, which interrupts the flow if the system pressure does not rise above the required minimum value.

Even if the flow is above the required value the electrical switch does not make unless there is sufficient system pressure to lift the pressure latch and allow flow back into the main line.

The advantage of this unit is its compact size and its need to use only one electrical switch, giving distinct benefit when cabling up into machine circuitry and subsequent fault finding.

Typical Applications

- To interrupt pilot electrical circuits on coal cutting machines if the minimum requirements for water flow and pressure on ITP systems are not met

MACHINE SAFETY

Pressure / Flow Switch Code 4900

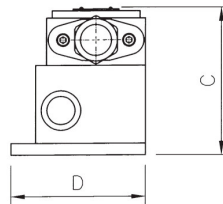
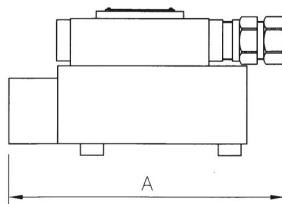
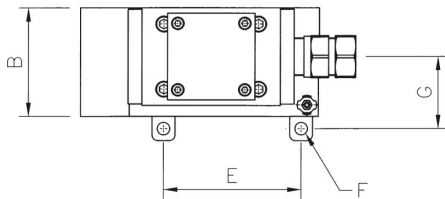
Features

- 3/4" BSP Water connections
- Maximum working pressure 207 ba
- Electrical switch to interrupt mining machinery
- Monitors both Flow and Pressure conditions
- FLP APPROVED - Cert. # MECS93C5036

Specifications

DIMENSIONS (mm)						
A	B	C	D	E	F	G
235	95	133	115	120	11	65
WEIGHT – 3 Kg						

TECHNICAL DATA	
Fluid Connection	3/4" BSP Inlet & Outlet
Electrical Connection	Hawke Gland Type G470/453/B/T
Max Fluid Pressure	207 bar
Flow Switching Range	9 LPM to 90 LPM
Pressure Switching Range	5 bar to 100 bar
Maximum Throughput	250 LPM
Maximum Current	5 ADC
Maximum Voltage	300 VDC



The information on this data sheet is accurate to the best of Conflow's knowledge, however we reserve the right to alter the product specification at any time. For any specific updated detail, please contact us.