

MACHINE SAFETY

Pre-Start Warning Unit Code 2629

Conflow is renowned the world over as the leading supplier of specialist components and systems for dust suppression, fire suppression and all aspects of water control in underground coal Mining.

Today Conflow products can be found operating both on the surface and underground in all the major mining industries, from coal to gold, in more than 30 countries around the world. Furthermore, wherever minerals are moved in bulk – such as quarries, power stations and steel works - Conflow products are helping to reduce the negative impact on the local environment.

At Conflow our aim is to provide you with a comprehensive range of services to meet your individual needs.



Description

The **Conflow Code 2629** - Pre Start Warning Unit interrupts the electrical pilot circuit of a coal cutting machine so that the drive motor cannot start until a predetermined time has elapsed following the starting of the dust suppression water.

The device has been designed to provide a positive safety measure to eliminate accidents in the vicinity of the cutting drums of mineral cutting machinery.

It does this by utilising dust suppression water sprays to drive anyone working in the danger zone clear of the cutting drum.

These water sprays operate for a fixed time (7 seconds, within the pressure parameters 10-70 bar) before the pilot circuit is made and the cutting drum starts to rotate.

The standard unit is a pressure switch with a built in time delay. A flow switch can be added to cover situations where all the warning sprays may be blocked and no other machine safety system has been specified.

Typical Applications

- To prevent mineral cutting machines from operating unless dust suppression water is spraying for a warning period prior to start up

MACHINE SAFETY

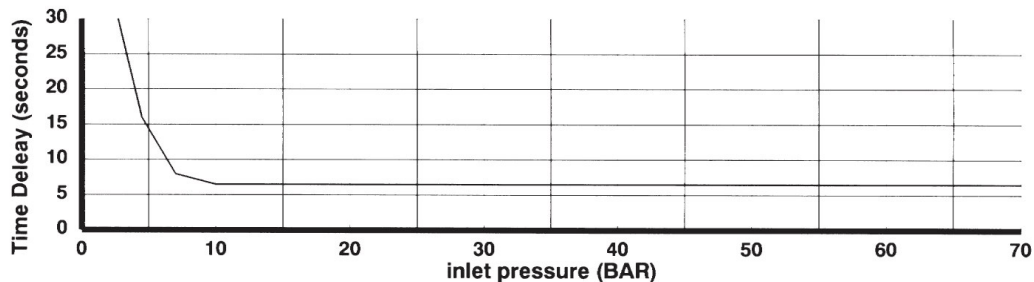
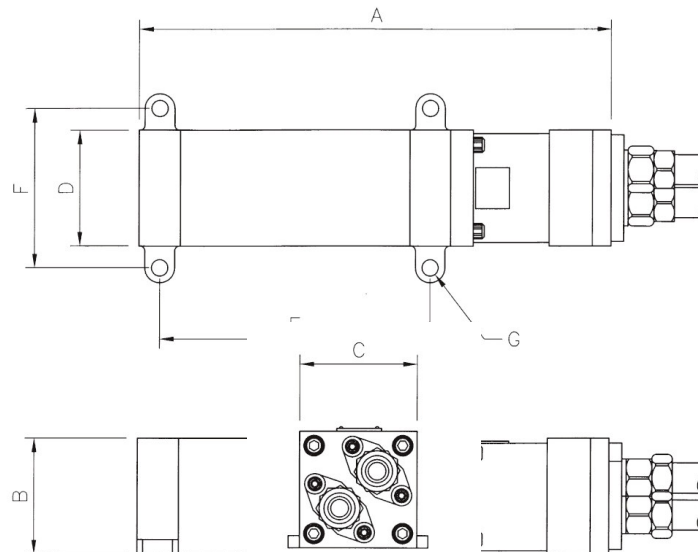
Pre-Start Warning Unit Code 2629

Features

- 3/8" BSP water connections
- Maximum working pressure 70 bar
- Provides 7 second delay between attainment of hydraulic pressure and switching off electrical circuit
- Electrical switch rating: - 250Vac @ 5A
: - 30Vdc @ 5A
- FLP Approved unit. Cert # 03ATEX1537

Specifications

	DIMENSIONS (mm)
A	390
B	100
C	102
D	102
E	223
F	136
G	11Ø
WEIGHT	26 Kg



The information on this data sheet is accurate to the best of Conflow's knowledge, however we reserve the right to alter the product specification at any time. For any specific updated detail, please contact us.