

FIRE SUPPRESSION

Weighted Lever Valve Code 97

Conflow is renowned the world over as the leading supplier of specialist components and systems for dust suppression, fire suppression and all aspects of water control in underground coal Mining.

Today Conflow products can be found operating both on the surface and underground in all the major mining industries, from coal to gold, in more than 30 countries around the world. Furthermore, wherever minerals are moved in bulk – such as quarries, power stations and steel works - Conflow products are helping to reduce the negative impact on the local environment.

At Conflow our aim is to provide you with a comprehensive range of services to meet your individual needs.



Description

The **Conflow Code 97** - Weighted Lever Valve is used to supply water to small fire barrier and Auxiliary Fan Systems.

The valve is operated by a lever, which falls under gravity due to a weight fixed to it. The weight is normally held in position with a wire rope, remotely secured and held in tension by the weight. Thermal links, spaced along the wire are activated by a rise in temperature, which relaxes the wire, allowing the weight to fall and open the valve.

Typical Applications

- To supply water to a mini fire barrier surrounding underground plant (e.g. A pumping station) to deluge a fire created by overheating equipment

Features

- 1" port size
- Maximum working pressure 105 bar
- Triggered by quartz thermal links @ 57°C
- Designed to be used as part of the Auxiliary Fan barrier and Mini Fire Barrier around pumping stations

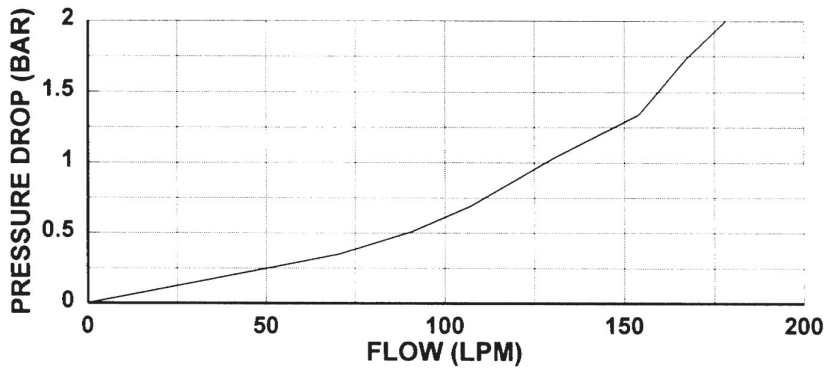
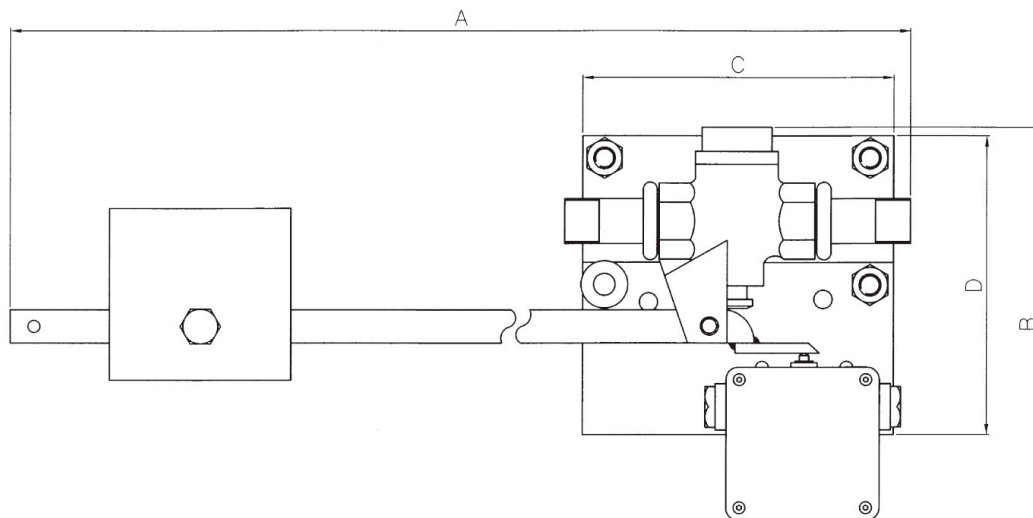
FIRE SUPPRESSION

Weighted Lever Valve Code 97

Specifications

A	1050
B	300
C	23
D	23
Weight	22.5 Kg *

* Unit with switch attached



The information on this data sheet is accurate to the best of Conflow's knowledge, however we reserve the right to alter the product specification at any time. For any specific updated detail, please contact us.