

## DUST SUPPRESSION

### 'V' Sprays Code 1293

Conflow is renowned the world over as the leading supplier of specialist components and systems for dust suppression, fire suppression and all aspects of water control in underground coal Mining.

Today Conflow products can be found operating both on the surface and underground in all the major mining industries, from coal to gold, in more than 30 countries around the world. Furthermore, wherever minerals are moved in bulk – such as quarries, power stations and steel works - Conflow products are helping to reduce the negative impact on the local environment.

At Conflow our aim is to provide you with a comprehensive range of services to meet your individual needs.



### Description

The **Conflow Code 1293** - "V" Spray provides a knife edge spray form making it suitable for a wide range of spraying purposes.

### Typical Applications

- For applying dust suppression water onto conveyers, feeder breakers and chutes

### Features

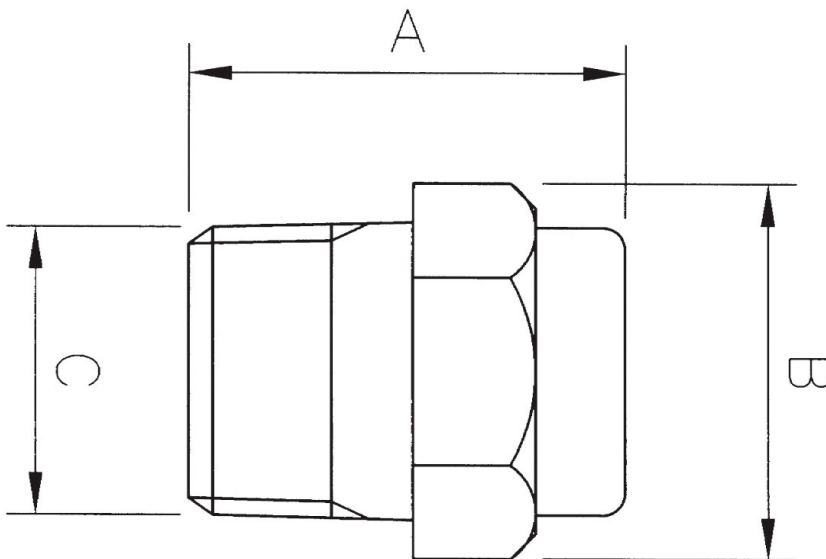
- 3/8" water connections (BSPT or NPT)
- Maximum working pressure 105 bar
- 1 piece construction
- Choice of 3 orifice sizes

## DUST SUPPRESSION

'V' Sprays  
Code 1293

### Specifications

A	B	C
31	3/8" WHIT HEX.	3/8" BSPT



Pressure (Bar)	Water Flow Rate (LPM)		
	Spray #1	Spray #2	Spray #3
7.0	7.5	13	30.0
14.0	11	17	41.0
21.0	13	21	49.0
28.0	15	23	54.0
35.0	17	26.5	58.0
42.0	19	28	63.0
48.0	21	30	67.0
55.0	23	31	70.0
62.0	23.5	33	74.0
69.0	24	34	77.0

The information on this data sheet is accurate to the best of Conflow's knowledge, however we reserve the right to alter the product specification at any time. For any specific updated detail, please contact us.